



 revesbyworkers'club

GMDC

2023

Thursday 7 September 2023

SCOTT BENNETTS

CHIEF EXECUTIVE OFFICER



revesbyworkers'club

Overview of Revesby Workers' Club Ltd

67,500+ Members across the group

379 Staff members

Dining Facilities

- Firestone Kitchen and Bar
- Aunty Eights Vietnamese
- Café 240
- TwoTwo//OneTwo Café
- Rogues Sports Bar
- Miss Iggys

Bar Facilities

- Firestone Bar
- Presidents Lounge Bar
- Rogues Sports Bar
- Bar 240
- Miss Iggys

Overview of Revesby Workers' Club Ltd

Lounge Spaces

- The Presidents Lounge
- Henry Lawson Library

Group Sites

- Mooney Mooney Club
- Revesby Workers' Sports Club

The Function Centre

- 3 Flexible Event Spaces
- Theatre catering for 1,100pax
- 2 Flexible Event Spaces within Henry Lawson Library

Overview of Revesby Workers' Club Ltd

Gaming Facilities (Group Total 564 machines)

- Revesby Workers' Club – 525 machines across three rooms
 - Main Gaming: 410
 - Private gaming: 54
 - Miss Iggys: 61
- Mooney Mooney Club – 24 machines
- Revesby Workers' Sports Club – 15 machines

Revesby Workers' Club Ltd

- 15 Links
- 100% TITO - accounts for 70% of payouts

237 Machines are Alfresco, 288 Indoors

- Smoking 45% | Floor = 51% Net
- Indoor 55% | Floor = 49% net

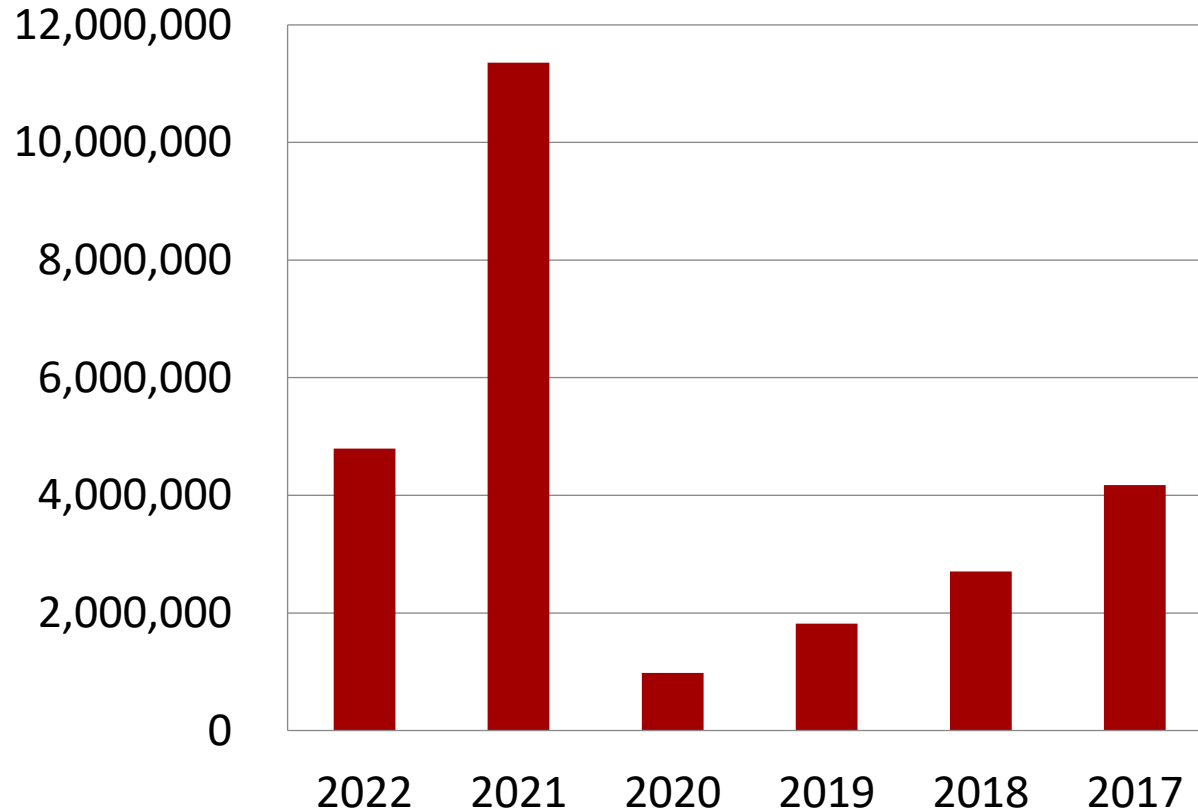
Denomination Breakdown

	Machine numbers	% Floor	% Net
1c	408	77.7%	80.8%
2c	4	0.8%	0.8%
5c	1	0.2%	0.2%
10c	18	3.4%	2.6%
20c	3	0.6%	0.4%
50c	2	0.4%	0.2%
\$1	31	5.9%	4.2%
MTGM	58	11.0%	10.7%
Total	525	100%	100%

Manufacturer floor percentage

	2017	2018	2019	2020	2021	2022	2023
AGT	17%	18%	17%	13%	13%	14%	9%
ALI	36%	40%	41%	49%	47%	46%	50%
IGT	22%	19%	18%	17%	17%	17%	16%
KON	3%	3%	3%	4%	4%	3%	4%
L&W	21%	18%	19%	16%	17%	18%	20%
ARUZE	1%	1%	1%	1%	1%	2%	1%
ATLAS	0%	1%	1%	0%	0%	0%	0%

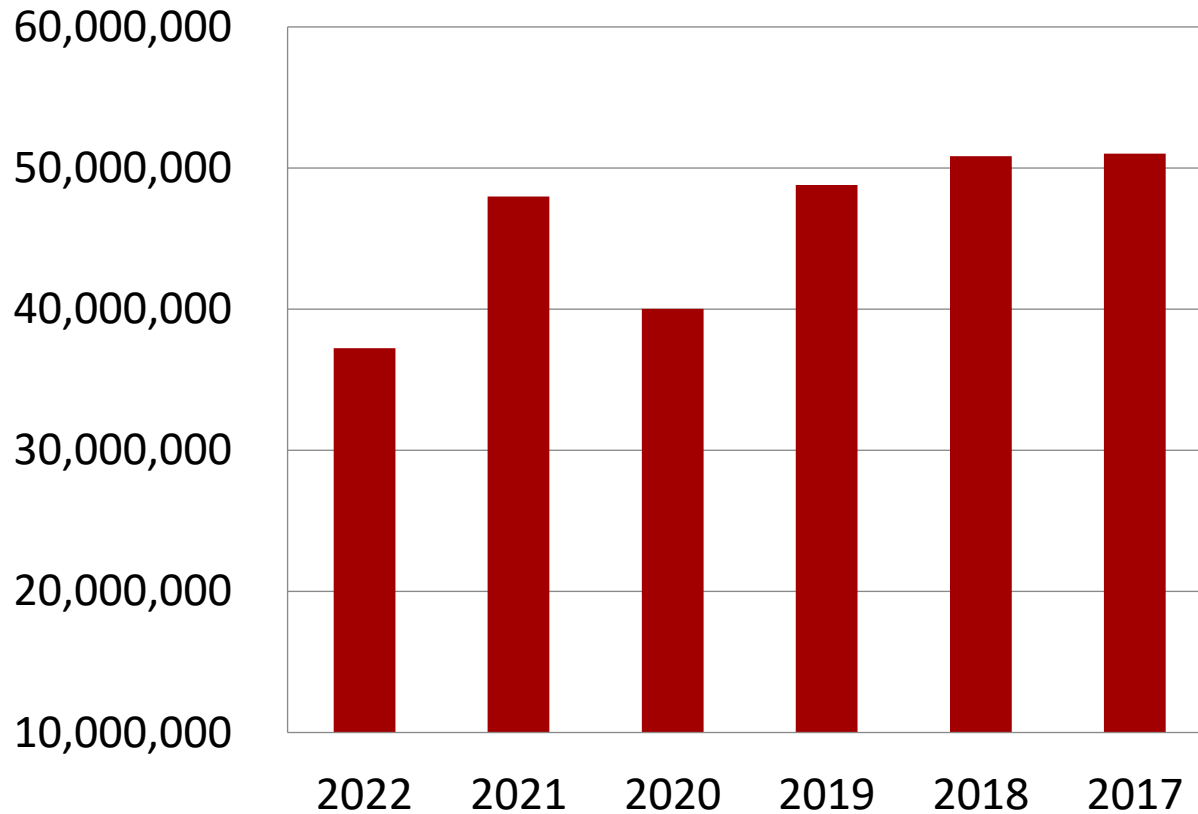
Profit (Loss) before tax



Profit (loss) before tax

2022	2021	2020	2019	2018	2017
\$4,796,959	\$11,357,217	\$983,094	\$1,817,012	\$2,750,638	\$4,176,378

Gaming Revenue



Gaming Revenue

2022

\$37.2m

2021

\$48m

2020

\$40m

2019

\$48.8m

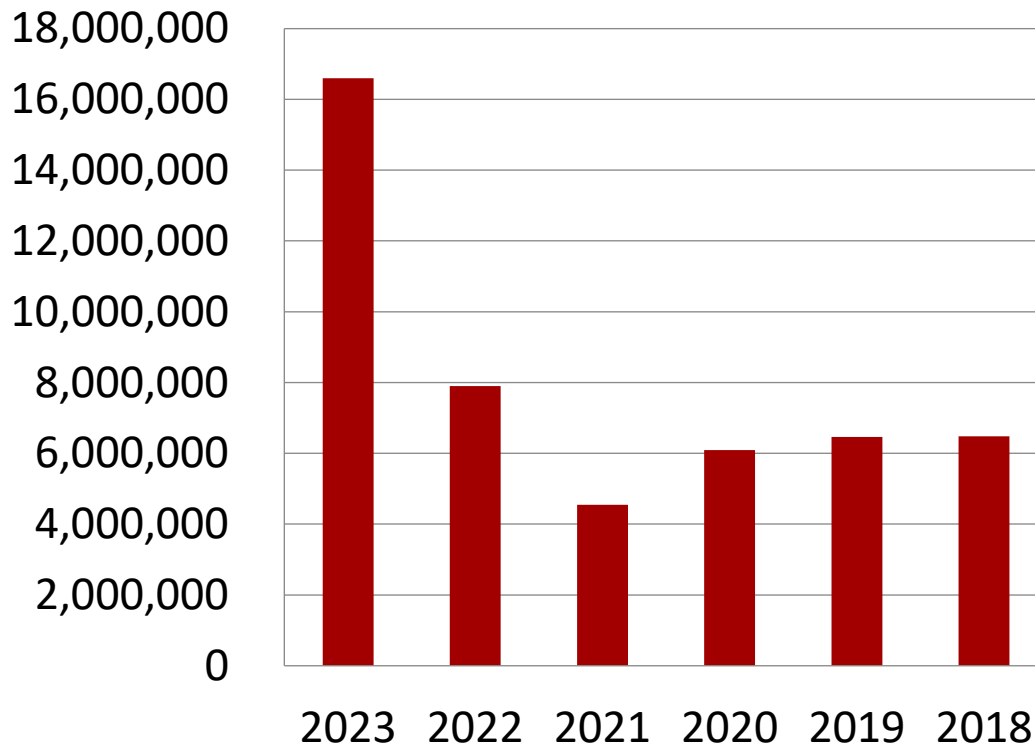
2018

\$50.8m

2017

\$51m

Total Capital Expenditure



Projects in FY21/22

- Women's Shelter
- Air-conditioning upgrade
- Sports Bar (\$2.3m)

Projects in FY22/23

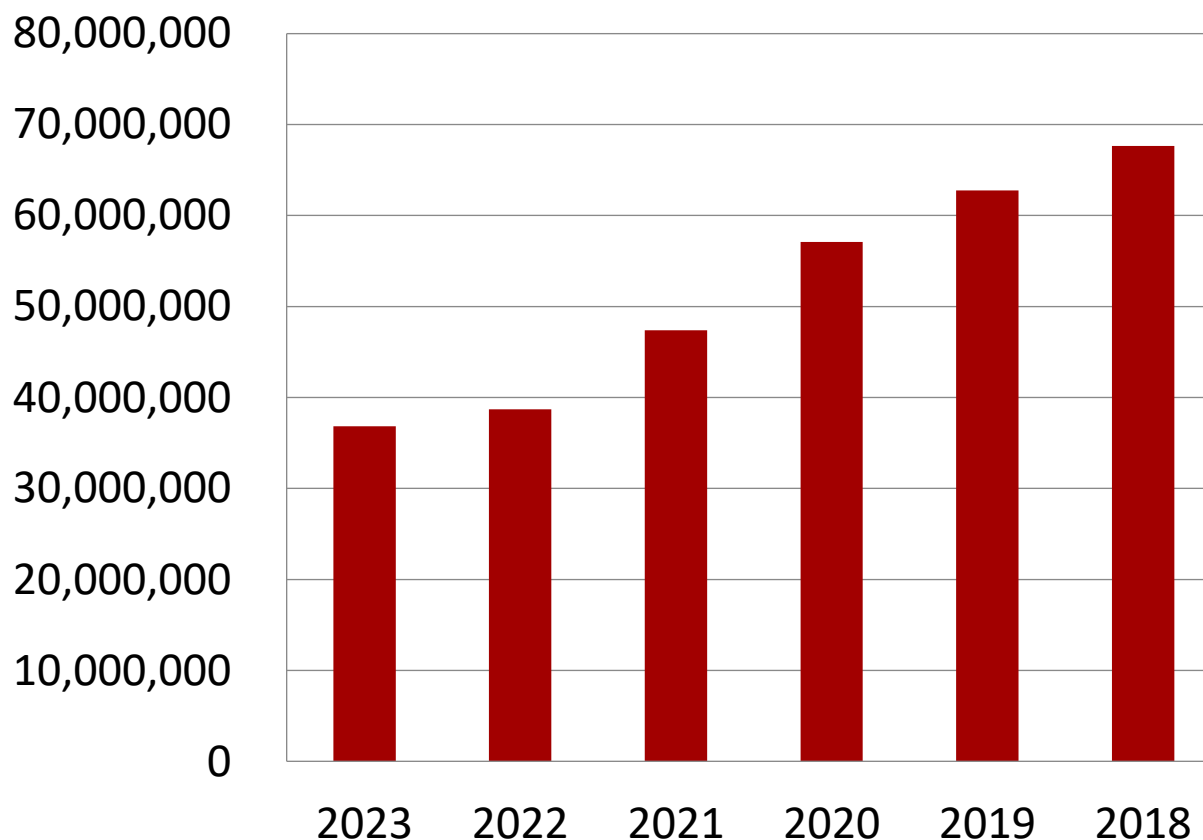
- Private Gaming
- Main Gaming
- Miss Iggy's

Projects in FY2024

- Auditorium & Functions

	2023	2022	2021	2020	2019	2018
Total Capital Expenditure	\$16.6m	\$7.9m	\$4.55m	\$6.09m	\$6.46m	\$6.48m

Interest Bearing Debt



Interest Bearing Debt

2023	2022	2021	2020	2019	2018
\$36.8m	\$38.7m	\$47.39m	\$57.10m	\$62.77m	\$67.65m



**Main Gaming Floor renovations
Completed May 2023**



**Private Gaming Room
Opened December 2022**



Health Mates Fitness Centre
First opened in 1996
Most recent upgrade – March 2021



 **The Tree House**
Early Childhood Centre
PH: 9771 6883 treehousecc.com

**The Tree House Early Childhood Centre
Opened in 2009**



**The Tree House 2 Early Childhood Centre
Opened November 2021**



**President's Lounge and Bar
Opened in 2013
Dedicated to past Presidents**



Firestone Kitchen and Bar
Open plan family friend dining | Seating inside for 300
Alfresco terrace | Seating for 170



**Auntie Eight's Vietnamese
Authentic street food**



Café 240 | Bar 240 | Henry Lawson Library



Rogues Sports Bar
\$2.4m renovation
Opened in December 2021



Miss Iggys
New entertainment offering
Lounge area | Gaming | Arcade | Bar | Live music
Opened in December 2022



Revesby Workers' Sports Club
2.5 bowling greens | Family friendly
Friday Charity Raffle | Trivia | Functions

Mooney Mooney Club

ON THE HAWKESBURY

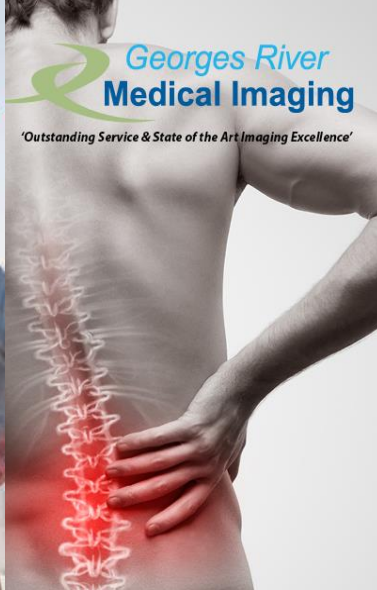
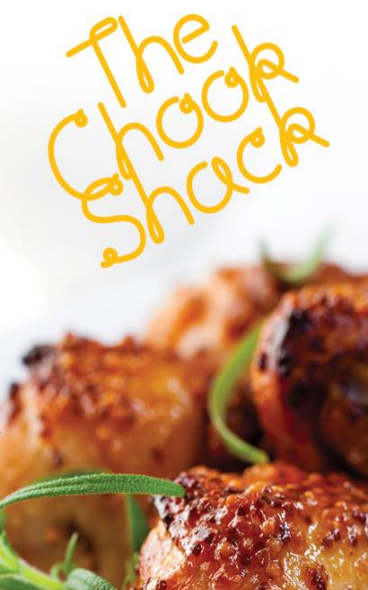
coastal



Mooney Mooney Club
Coastal Dining | Bowling Greens



**Revesby Village Centre
Opened in 2014**



230 basement car park over 2 levels
3 level commercial precinct
Retail and specialty, medical and entertainment

QUESTIONS

THANK YOU



revesbyworkers'club