

# St Marys Rugby League Club

- ▶ GMDC presentation
- ▶ Stewart Graham
- ▶ Chief Operating Officer

# Club Summary

- ▶ 2 Properties – St Marys Rugby League Club & Holiday Inn Sydney St Marys
- ▶ 45,000 Members
- ▶ 8 Bars (11 as of end of September)
- ▶ 450 Gaming Machine Entitlements – 433 active (450 active 7<sup>th</sup> September)

# Holiday Inn Sydney St Marys



# Western Foyer Development



# Western Foyer



# Western Foyer



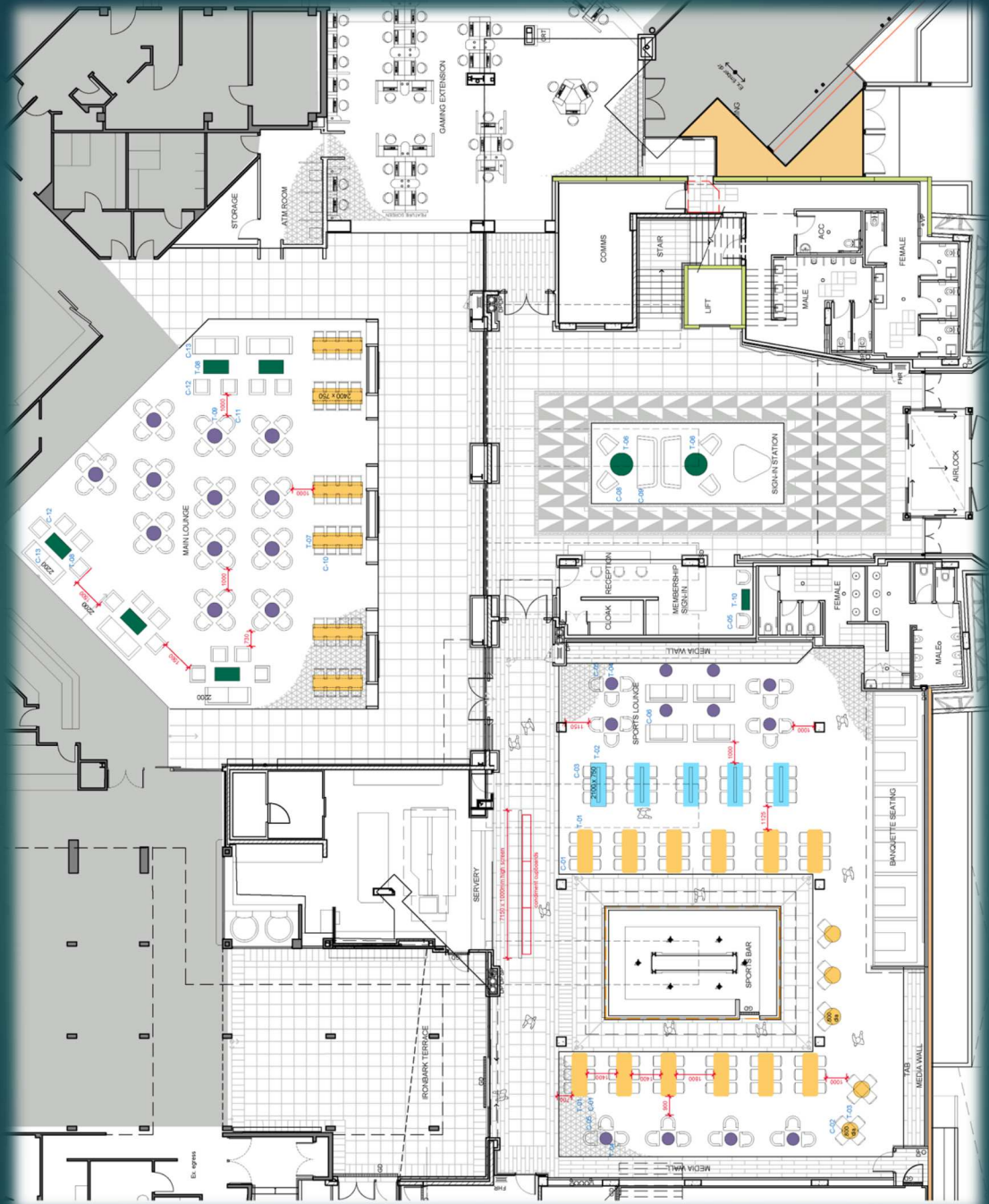
# Sports Bar



# Sports Bar









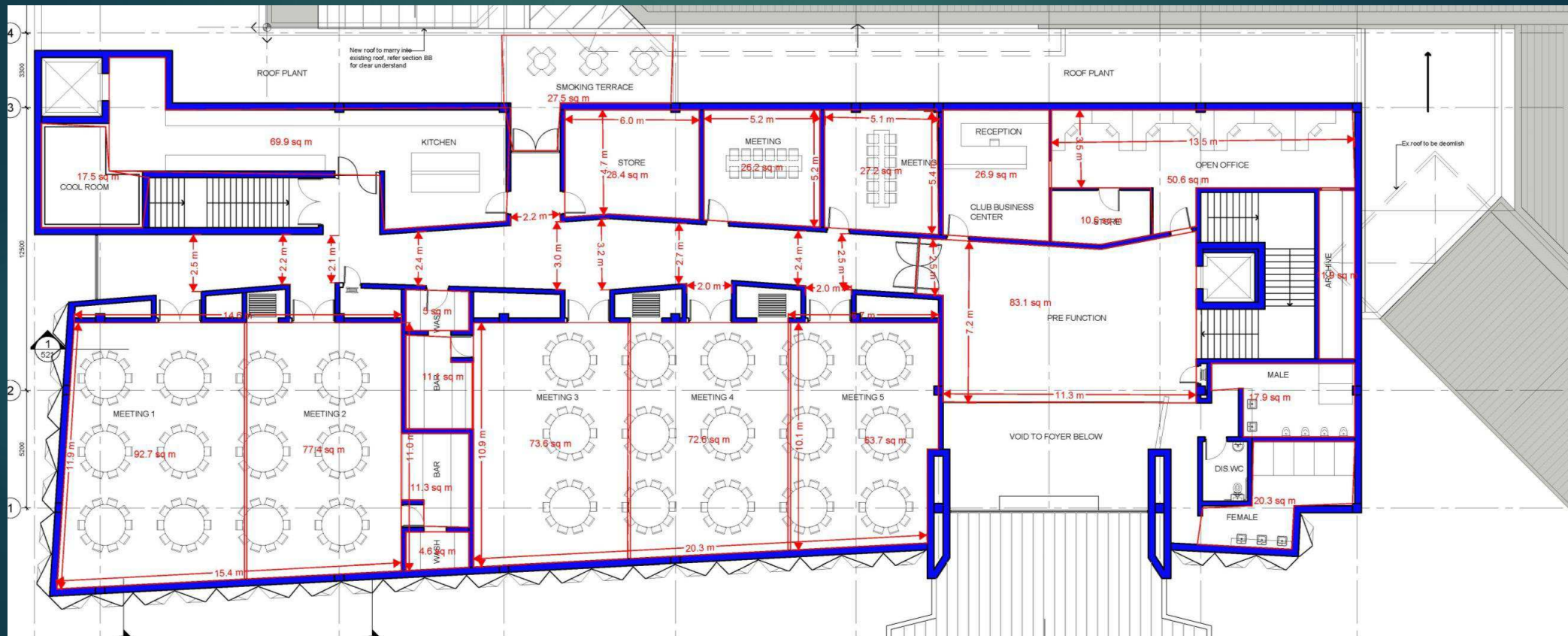


<https://drive.google.com/file/d/1RjIZM0U2Vtkx5iDBEfmB5Dyc51Qjyk/view>

# Function Center



# Function Center



# Opening Date & Procedure

The opening date and procedure will be dependent upon several variables:

- Certifier Approval
- Weather (completion of outside works)
- Fire Audit



# SAINTS SPORTS

Wednesday – Friday from  
11.30am

Saturday & Sunday from 11am



SAINTS  
SPORTS

## Booth Bookings

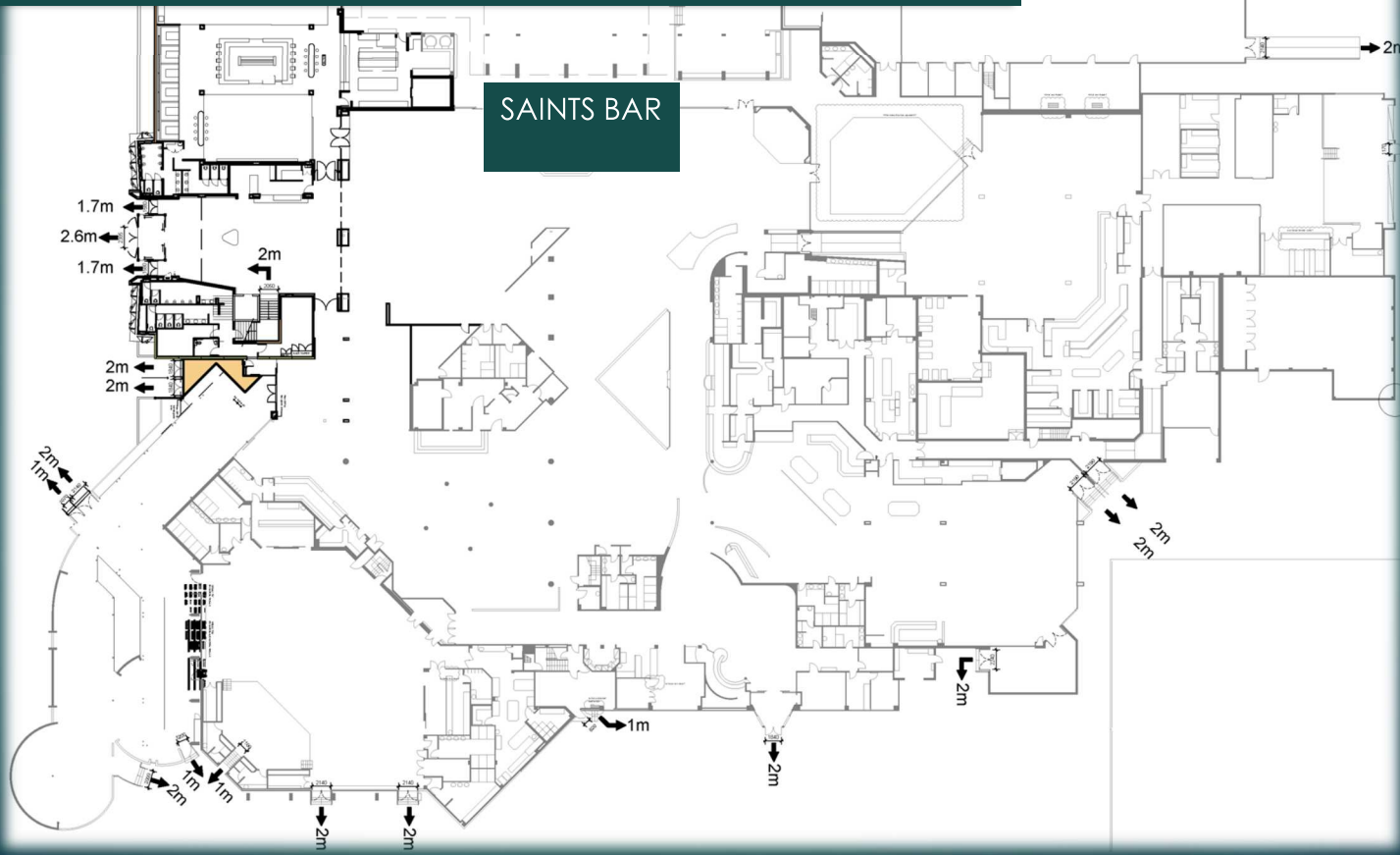
- Reserved for up to 5 hours, either pre or post 5pm (15 minute reset required)
- Bookings via Club website
- \$200 non-refundable deposit payable at time of booking.
- \$200 deposit payment loaded to Saints Sports Card for food and beverage purchases.
- Table signage with confirmed reservation time. Booths can be occupied by other patrons prior.
- Food ordered at the Bar or Via ClevaQ and collected from the Saints Sports kitchen.
- Restricted area ie. no minors.



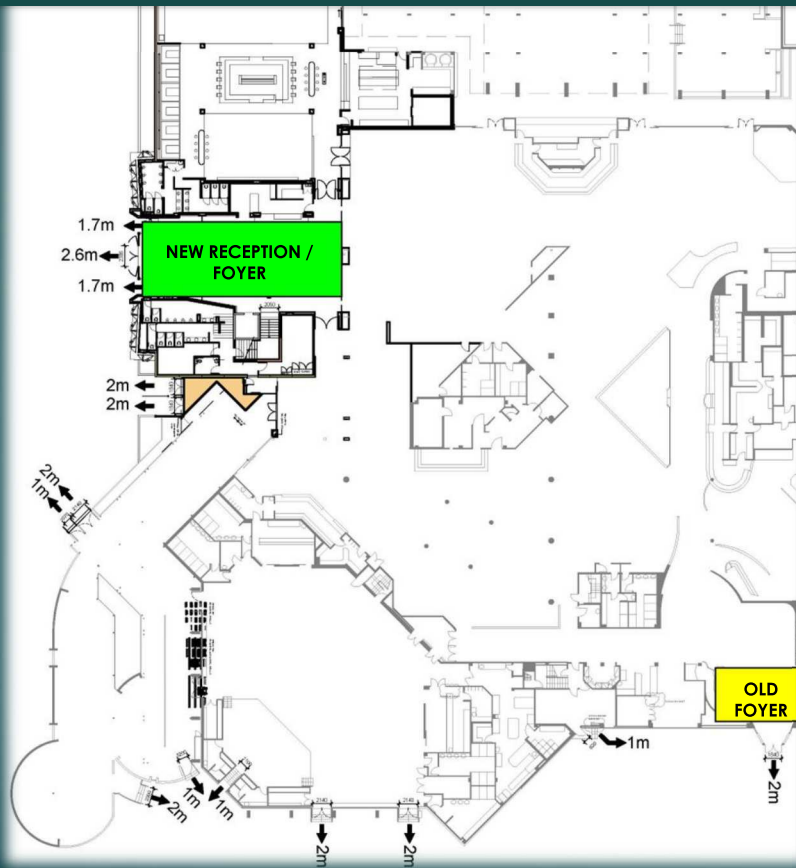
# SAINTS *event* CENTRE

- Soft Openings last week of September.
- Start taking bookings Tuesday 4 October  
*(after the long weekend).*

# Existing Saints / Sports Bar to open Monday to Sunday



# New Reception / Foyer Open to Close 7 days



## Old Reception / Foyer

- Sun to Thurs 6.30am – 9pm
- Fri & Sat 6.30am – 12am
- Security stationed at door after closing.
- When closed, No Entry signage outside of entrance.
- Hotel Guests permitted entry.
- 1 x Additional Security Guard 5 nights a week.

# Tap layout

	1	2	3	4	5	6	7	8	9	10	11	12	13	14	15	16	17	18	19	20
	Tooheys NEW	Super Dry	XXXX	HPL	Tooheys OLD	James Squires	Stone & Wood	Kosi	Ginger Beer	VB	Carlton Dry	GN Super Crisp	Carlton Draught	Blonde	Reschs	Balter	4 Pines	Coopers	Young Henrys	Canadian Club
Sports Bar A (14)	Lion	Lion	Lion				Lion	Lion	Lion	CUB	CUB	CUB				CUB	CUB			
Sports Bar B (14)	Lion	Lion		Lion	Lion	Lion	Lion			CUB	CUB	CUB	CUB	CUB	CUB	CUB				
Saints Bar A (8)	Lion	Lion	Lion	Lion						CUB	CUB	CUB			CUB					
Saints Bar B (8)					Lion	Lion	Lion						CUB	CUB		CUB				
Ironbark A (8)	Lion	Lion	Lion							CUB	CUB	CUB								
Ironbark B (8)						Lion	Lion	Lion	Lion					CUB		CUB	CUB			

# Strategic Planning – Key Questions

What Next – Club Improvements next 12 months to 5 years?

- Renewable Energy
- Seniors / Assisted Living Development
- Parenting Room
- St Marys Leagues Stadium Upgrade
- Internal Highway
- Gaudi Gaming Lounge
- Saints Bar Renovation
- Saints Bar Toilets Upgrade
- Holiday Inn – Refurbishment / Operations
- McDonalds Site
- Office Renovations
- Boronia Showroom
- Roof Sheeting Replacement

# Strategic Planning – Key Questions

- (i) What Next – Club Improvements next 12 months to 5 years?
- (ii) Does the Club need to get any bigger?
- (i) If the Club accumulated significant excess cash over the next 5 years, what would we do with it?

# Total Capital Outlay

- ▶ Holiday Inn Sydney St Marys - \$24.5 million
- ▶ Power Upgrade - \$2.3 million
- ▶ Western Foyer/Sports Bar/Gaming/Events Centre - \$24.2 million
- ▶ Net Debt - \$13 million (\$18 million in loans, \$5 million in deposits)